

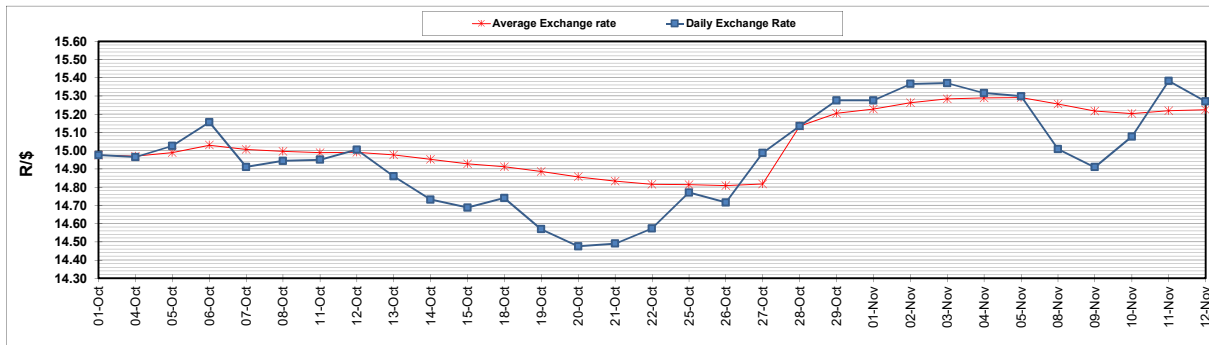
	PETROL 95 ULP	PETROL 93 ULP & LRP	DIESEL 0.05%	DIESEL 0.005%	ILL. PAR.
GAUTENG PUMP PRICE (SA c/l) AS FROM 03/11/2021	1,954.000	1,932.000	-	-	-
WHOLESALE PRICE (SA c/l) AS FROM 03/11/2021	-	-	1,719.980	1,723.380	1,125.488
SINGLE NATIONAL MAXIMUM RETAIL PRICE	-	-	-	-	1,433.000
BASIC FUEL PRICE - 12/11/2021 (SA c/l)	935.161	916.597	918.199	924.002	907.023
PRESS RELEASE CONTRIBUTION TO BFP 03/11/2021 - 12/11/2021 (SA c/l)	937.110	925.110	917.630	921.030	912.128
UNIT OVER/(UNDER) RECOVERY - 12/11/2021 (SA c/l)	1.949	8.513	(0.569)	(2.972)	5.105
AVERAGE BASIC FUEL PRICE 28/10/2021 - 12/11/2021	965.785	945.109	933.298	939.146	925.813
AVERAGE UNIT OVER/(UNDER) RECOVERY 28/10/2021 - 12/11/2021	(68.274)	(59.600)	(64.334)	(66.782)	(62.019)

ANALYSIS MOVEMENT OF AVERAGE OVER/(UNDER) RECOVERY

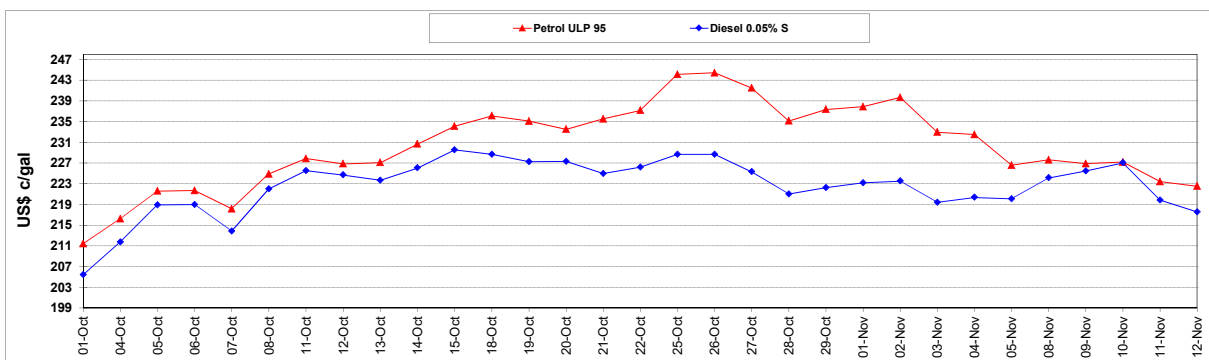
	PETROL 95	PETROL 93	DIESEL 0.05%	DIESEL 0.005%	ILL. PAR.
- MOVEMENT IN INTERNATIONAL PRODUCT PRICES	(42.493)	(34.369)	(39.421)	(41.713)	(37.304)
- MOVEMENT IN EXCHANGE RATE	(25.782)	(25.230)	(24.914)	(25.070)	(24.714)
AVERAGE UNIT OVER/(UNDER) RECOVERY 28/10/2021 - 12/11/2021	(68.274)	(59.600)	(64.334)	(66.782)	(62.019)

R/\$ EXCHANGE RATE - (R/\$15.2710 - 12/11/2021)

EXCHANGE RATE USED IN BASIC FUEL PRICE



INTERNATIONAL PRODUCT PRICES OF BASKET USED IN BASIC FUEL PRICE



BASIC FUEL PRICE IN SA CENTS PER LITRE

